

The influence of welding conditions on mechanical properties of 9% Ni steel welded joints of Liquefied Natural Gas tank.

¹Abd El Fattah Mustafa Khourshid, ²Mohamed Ahmed A. Ghanem

¹Head of Production Engineering and Mechanical Design Department, Faculty of Engineering – Tanta University

²PHD student. of Production Engineering and Mechanical Design Department, Faculty of Engineering – Tanta University

ABSTRACT

The risk assessment of using LNG especially with little thickness storage tank to be more economy become need more research to get grantee to use this technology with new imagine .

The only way to enhanced the mechanical properties of welded joint by controlling the parameters of using welding process. From the main variables of the arc welding process are the heat input and interpass temperature where the two variables control the thermal cycle of welding process.

But there are limitations on the heat input and interpass temperature. The limitations of the welding parameters are greater as the strength of the parent metal increases. Where using the too high heat input as well as high interpass temperature that produce welded joint with low tensile strength, low hardness and low toughness mechanical properties. Although the low heat input or low interpass temperature increase the susceptibility of existing hydrogen crack.

The combination of welding parameters, notably interpass temperature, are identified for SMAW process of a 9% Ni steel plates to improve the zones of welded joint strength and toughness properties. Results showed that for thin test specimen , the heat input range from 1.4 to 2 Kj/mm and controlling interpass temperature within 80° C give high tensile strength and improve the toughness properties of welded joint and reduce the probability of brittle fracture happened .

Keywords - 9%Ni steel plate ,LNG tank , Heat Input ,Mechanical properties ,Toughness, Tensile strength, SMAW.

Abbreviation - LNG-Liquefied Natural Gas ,HAZ- Heat Affected zone , W.M -Weld Metal , H.I –Heat Input , PWHT - post weld heat treatment

Date of Submission: 22 December 2012



Date of Publication: 11, January 2013

I. INTRODUCTION

The construction of welded structures for low-temperature service which have to undergo severe operating conditions, are not only the steels to be used, but also all their weldments, must have excellent low-temperature notch toughness such as austenitic stainless steel ,aluminum and 9%Ni steel [1-2].

For example Liquefied Natural Gas (LNG) Methane will liquefy at -163°C and is therefore stored or transported around -170°C. At this low temperature quenched and tempered 9% nickel steels have The excellent low temperature notch impact properties of 9% nickel steels arise from the fine grained structure of tough nickel-ferrite free from embrittling carbide networks. The optimum microstructure and mechanical properties are

obtained by a carefully controlled heat-treatment in the production of the steel.

Combination of high strength and good toughness is essential for the steels used in liquefied natural gas epically there is a high risk assessment of probability of leakage done.[3].

The weldability of 9% nickel steel is excellent and the steel is not susceptible to cracking and shows little or no deterioration of the properties by the heat inputs normally used during the welding with procedures . Heat input should not exceed 3 kJ/mm and interpass temperature must be limited to max 100-150°C [1- 3].

These unique properties of the 9% Ni steel plates have resulted from the microstructure where consist mainly from fine martensite and from 5-15% retained austenite. This microstructure is existing due to quenching and tempering[4-6].

The strength and toughness required for the weld metal differs greatly depending upon the application for which the structure is employed and according to the type of steel and welding materials. However, depending upon the welding processes the thermal conditions differ greatly up to the time when the weld metal is formed, solidifies and is cooled [7]. and welding materials are employed. .

Both strength and toughness are critical properties since failure may occur through either ductile rupture or fracture. The combination is important since strength and toughness have an inverse relation to one another; an increase in strength at given temperature almost invariably leads to a decrease in fracture toughness. While there is no reliable quantitative theory of the strength—toughness relation of structural alloys[8] .

For such inhomogeneous systems, measurement of the toughness alone has little meaning if it is not related to the tensile properties of the material system. It has been demonstrated that the apparent fracture toughness of the same HAZ microstructure can be changed dramatically by just changing the tensile properties in the adjacent weld metal [9].

The cooling rate is a primary factor that determines the final metallurgical structure of the weld and heat affected zone (HAZ), and is especially important with heat-treated steels. When welding quenched and tempered steels, for example, slow cooling rates (resulting from high heat inputs) can soften the material adjacent to the weld, reducing the load-carrying capacity of the connection. Under different weld heat inputs, the impact energy of the HAZ has a larger difference, indicating a tendency for a change in the fine structure of the HAZ [10].

As interpass temperature is increased, the main microstructural effect is that the amount of columnar structure within a reheated weld bead is reduced and an increase in the amount of re-austerities and tempered areas is seen especially within the central beads of a welded joint. Little effects are seen on the cross sectional area of each weld bead deposited with increase in interpass temperature but the proportion of recrystallised area increases [11]. By eliminating the columnar microstructure, hardness becomes more uniform and is reduced. There is also a reduction in strength by increasing interpass temperature however toughness at low temperatures increases.

To conclude, control of welding parameters such as interpass temperature is important. The Recent work [12] analyzed the variation of mechanical properties of high strength weld metals and concluded that variations in yield

strength were not alone due to compositional variations, but also to process parameters such as the weld metal interpass temperature.

Previous investigations have demonstrated the effective welding parameters on both of weld metal and heat affected zones as a function of the cooling rate from peak temperature[13-16] . Consequently, it concern on the improving of the toughness properties and the microstructure of welded joint to be in good condition by using heat input in the range from 1-3 KJ/mm and the interpass temperature no more 150 °C with specimens thickness more than 20 mm

More recent work identified that heat input affects on the microstructure to improve the toughness of welded joint by controlling the cooling rates and creates types of ferrite phase and the effect of creation of ferrite types on the tensile strength of welded joint. [17-19].

However, this paper concern on heat input and interpass temperature as the main factors for affecting the embrittlement of weld joints, when the heat input is in suitable range and controlling the interpass temperature the in order to improve the tensile strength and toughness properties of welded joint . By using shield metal arc welding process with heat input rang from 1.3-2.5 KJ/mm ,interpass temperature within 80 C° and test specimens of 9%Ni steel plate with thickness 6 ,10& 14 mm in vertical position .

II-Experimental procedure

A- Base metal

The SA 553 type 1 (9%Ni)steel is the used material for the liquefied natural gas (LNG) tank application . Its microstructure content from martensite and retained austenite about (5 to 15% of structure size) as shown in (Fig 1) ,so this posses tensile strength range from 620 to 850 MPa , impact energy at -196 C° reach to 100j and more .[20].

The test specimens are three crews with different thickness size 6,10 and 14 mm thickness . The chemical and mechanical properties of 9%Ni steel plate according to standards and the actual used according to material certificate as shown in table 1&2 [21].

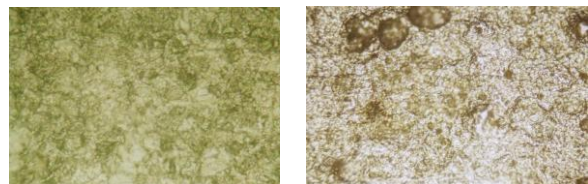


Fig1 Present the microstructure of 9% Ni steel plate

Table 1 The chemical composition of 9%Ni steel according to standards and the actual of the used plate specimens

Designation	Chemical composition (%)										
	C	Mn	Si	P	S	Ni	Mo	Cr	Ti	Cu	Nb
A553 Type I	≤0.13	≤0.9	0.15-0.3	≤0.035	≤0.04	8.5-9.5	0.12	0.3	0.03	0.4	0.02
SL 9N 60 (JIS G 3127)	≤0.12	≤0.9	0.15-0.3	≤0.025	≤0.25	8.5-9.5					
EN10028.4 X3Ni9	<0.10	0.3-0.8	<0.35	<0.02	<0.01	8.5-10					
EN10028.4 X7Ni9	<0.10	0.3-0.8	<0.35	<0.015	<0.005	8.5-10					
14 & 10 mm	0.05	0.56	0.25	0.002	0.001	9.18	0.01	0.01	0.002	0.01	0.001
6 mm	0.06	0.55	0.2	0.004	0.001	9.11	0.1	0.02	0.005	0.01	0.004

Table 2 the mechanical properties of 9% Ni steel according standards and actual parent metal

Specification	Y.S. [R.T*]	UTS [R.T*]	EL54 [20°C]	Kv [196°C]	
	(MPa)	(MPa)	(%)	KvT ≥ 27J	KvL ≥ 34J
ASTM A553-1	≥ 585	690 - 825	≥ 20.0	KvT ≥ 50 J	KvL ≥ 70 J
EN 10028.4 X3Ni9	≥ 575	680 - 820	≥ 18	KvT ≥ 80 J	KvL ≥ 100 J
EN 10028.4 X7Ni9	≥ 575	680 - 820	≥ 18	KvT 20.5-226-236	1.7-1.72-1.76
Parent metal 14/10 mm	665	715	44	KvT 34-40-40	1.41-1.56-1.54
Parent metal 6 mm	650	700	34		

R.T * Room Temperature

** Test specimen chemical and mechanical properties according to material certificate of base metal

B-The Welding process

Welding with stick electrodes however, is still a very flexible and viable process for welding under site conditions, all positions and all materials. A respected economy is also offered when using high recovery electrodes.

So by using SMAW as welding process, electrode ENiCrFe4 with 2.5, 3.2 and 4.0 mm diameter to weld SA553 type I steel test specimen with thickness 6, 10 and 14 mm. The interpass temperature controlled to no more than 80° C with using low ampere and increasing the travel speed to reduce the heat input.

The chemical composition and mechanical properties of electrode ENiCrFe4 according to construction code standard and actual electrode certificates as shown in Table 3, and 4 [22]

Table 3 The chemical compositions of ENiCrFe4 from code and actual values

Designation	C	Mn	Fe	P	S	Si	Cu	Ni	Cr	Nb Plus Ta	Mo	Other Elements Total
ENiCrFe4 [21] standard	0.2	1.0-3.5	12	0.03	0.02	1.0	0.5	60 min	13-17	1.0 to 3.5	1.0 to 3.5	0.50
Weld metal	0.09	2.66	11.08	0.01	0.002	0.26	0.02	65.52	15.79	1.76	2.57	0.238

Table 4 The mechanical properties as standard and actual value of ENiCrFe4

	Test temperature	Tensile strength	Yield strength	Elongation (%)
ENiCrFe4 (21)	Room temp.	660 (Min) MPa	360 (Min) MPa	20 (Min)
The geometry of welded joints as shown in (Fig 2)				
All weld metal	20°C	669 MPa	413 MPa	41%

with different root opening according to the using of electrode diameter .

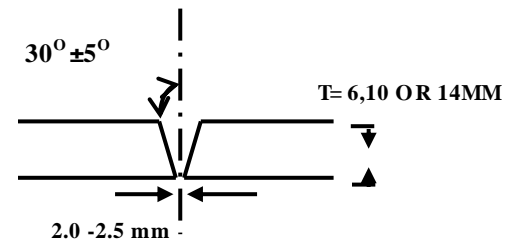


Fig 2 The joint shape for different thickness (6, 10 & 14mm)

The mechanical tests included tensile strength ,impact, Bend and Lateral expansion tests .

III RESULTS AND DISCUSSION

3.1-Tension tests

The tensile properties of the specimens obtained from the welded joints with three different heat input levels are shown in Fig 4 to Fig 6. The tensile test results show that different heat input levels are all above 690 MPa, which is higher value of the material standards.

From the metallurgical aspects the microstructure of solidification weld deposit can be determine by determine the time of cooling process between 800 to 500 °C .So from the heat transfer the next equation to calculate the time of

cooling from 800 to 500 °C depend on the heat input have been used during the welding of test specimen in 3 dimensions.

$$\Delta t_{8/5} = (H.I / 2 * K * \pi)^* [1/500 - 1/800] \dots \text{Eq. 1}$$

Where

H.I = heat input

K=coefficient of thermal conductivity (w/m.K)

According to the Eq. 1 the time of cooling from 800/500°C the time range is between 7.2 to 13.6 sec that related to H.I range from 13.4 to 25.2 KJ/mm.

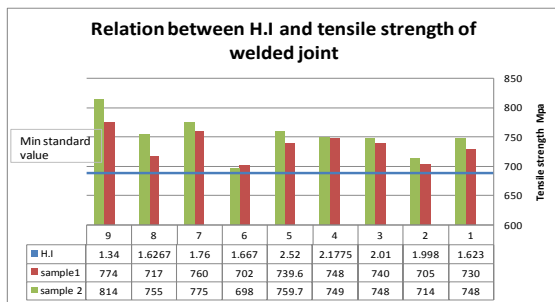
The max tensile strength value exist with applying welding with the lowest heat input, this is return to higher cooling rate that is permission to austenite crystals structure to transform to martensite during welding solidification [23].

The different relation tensile strength and the heat input is shown in Fig 3 ,where the development of tensile strength value with decrease the heat input because the lower the interpass temperature effect with still small cooling time make the microstructure more fine grains .

The effect of increase the thickness of test specimens shown on

the tensile test results as the thickness increase as the tensile decrease too [16] this shown on Fig 4 points 1-6 .

Although the fracture of test specimens done in weld metal zones in some test specimens but with strength values higher than the minimum value of base metal.



Point No 7-9- (6mm) , Point No. 4-6 (10mm) ,Point No 1-3 (14mm)

Fig 3 Show the effects of H.I and Interpass temperature on tensile strength of test specimens

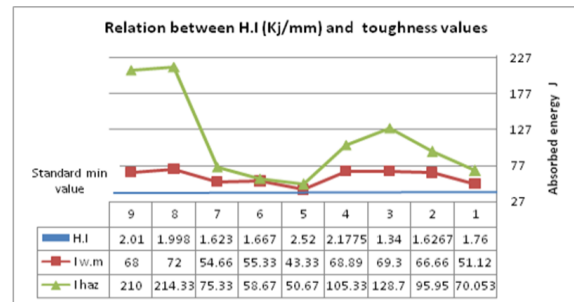
The compared results show that heat input has a big effect on the tensile properties ,with the increase of heat input ,the tensile strength of welding joint only decreases .

B- Notch-Toughness tests

The Charpy V notch impact toughness data obtained at -196 °C from the WM and HAZ regions of three weld joints welded with heat inputs levels are presented in Fig 4 which the figure with underline shows the average value of the impact absorbed energy. It is clear that the impact toughness of every zone of the weld joints with three different heat input levels all satisfy the demand of 27 J at -196 °C as required by standard , even when the heat input is in the range of 13.4–25.2 kJ/cm.

The results of toughness in HAZ and W.M zones were increased as H.I decreased . Austenite –rich and ferrite –rich bands are formed during soaking

because of the redistribution of element C,N and Ni as shown in Point No 1-3.The austenite enriched of C,N and Ni is still stable [24] .



Point No 7-9(14 mm),point No 4-6(10 mm), Point 1- 3No(6 mm)

Fig 4 The Impact tests results of test specimens with different thickness & different H.I.

The Max toughness results exist in HAZ zone than the results of W.M zone where the structure of HAZ is mainly martensite and retained austenite affected by the heat input only and W.M is mainly Ni base alloy and has coarse grains .

The results of points from 4 to 9 show that the increase in H.I has increase in the value of impact energy especially in points 4,8 and 9 in HAZ and W.M this return to still the time of cooling rate is lower and the microstructure in HAZ zone is martensite and austenite with but due to the using nickel base alloy electrode (ENiCrFe4) the Ni alloy content is approximately about 60% so the weld metal phase is austenite structure but with coarse grains .

With keep consideration the effect of increase the thickness of specimens and reduce the tensile strength of base and weld metal as increase the heat input with controlling the interpass temperature at 80 °C .

C- Guided-Bend tests

The bending test at room temperature, all test samples for 6&10 thickness were tested for root bend (R.B)and face bend (F.B)but for 14 mm and the bend test were side bend (S.B) .The results showed good ductility for all joints &all were free of surface crack or any other surface defect as the following table 5.

Table 5 Present the locations and results of Bend Tests

Thickness	Test	Bend test	Bend test	Bend test	Bend test	Result
6 mm	1	R.B	R.B	F.B	F.B	No surface defect found
	2	R.B	R.B	F.B	F.B	
	3	R.B	R.B	F.B	F.B	
10 mm	1	R.B	R.B	F.B	F.B	
	2	R.B	R.B	F.B	F.B	
	3	R.B	R.B	F.B	F.B	
14 mm	1	S.B	S.B	S.B	S.B	
	2	S.B	S.B	S.B	S.B	
	3	S.B	S.B	S.B	S.B	

D- Lateral tests

As in Fig 5 the Lateral test results show that there are different relations between lateral expansion values in Weld metal(W.M) ,HAZ and heat input . Where the lateral expansion of W.M zone are decreased as H.I increased ,the Lateral test results of HAZ zone are increased as H.I increased .

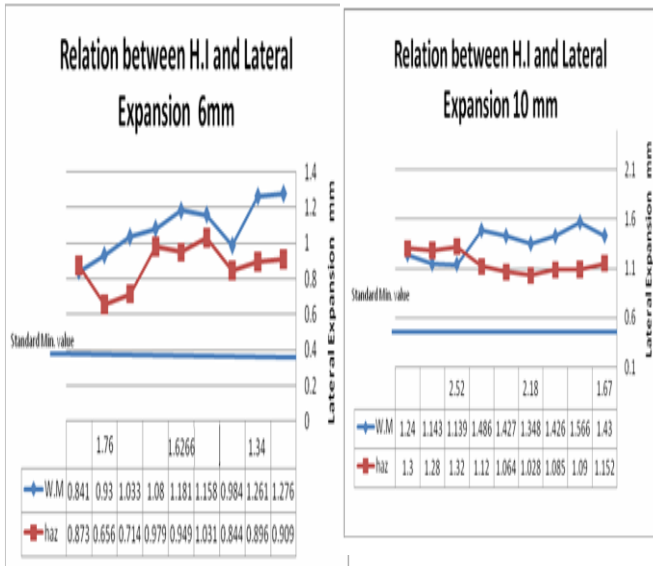


FIG 5 The Relation between H.I and Lateral expansion test of test specimens

Although as in Fig.6 the lateral expansion of W.M and HAZ zone are increased as H.I increased and the values of lateral test results of HAZ are greater than the results of W.M zone .

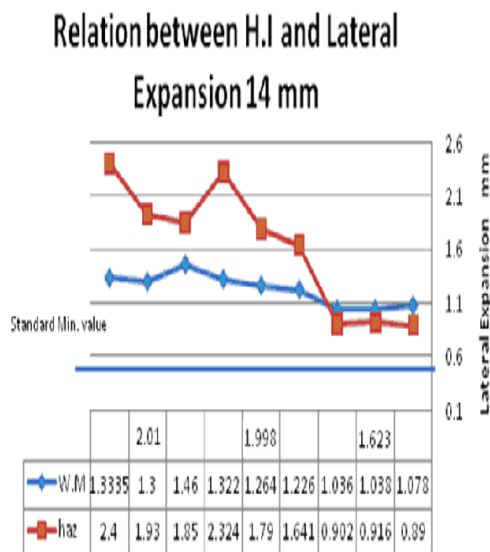


Fig 6 The Relation between H.I and Lateral expansion test of test specimen

The all results of lateral expansion tests show that the W.M and HAZ zones are more than the value of ASME standard required (0.38 mm) and with average 09mm.

This is meaning the Welded joint zones are high ductile and for the HAZ zone the structure still uniform and fine grains. The W.M zone are still low

values comparing with the values of HAZ due to have a different chemical composition and the main alloy element is Ni .

The results show also the increase in lateral expansion results of test specimens increase in the cooling rate during the solidification of welded joint and increase in the yield to tensile strength ratio [25]

IV. CONCLUSION

Based on the results achieved in this research, it can be concluded that The H.I with range value with 1.4 Kj has a big affects on the tensile strength and toughness properties of welded joints and give a Max. values with keeping the control of interpass temperature with 80 °C for thickness 6mm.

It is recommend to apply H.I with no more 2.0 Kj/mm to the thickness of test specimen 10 &14 mm with keeping the interpass within 80° C to produce high tensile strength and toughness properties in all welded joint zones .

The all range of H.I from 1.34 to above 2.0 Kj and controlling the interpass temperature with 80 °C has no effect on the quality and is not one of reason to create a defect in welded joint according to bend test.

The increase of thickness of test specimen play a major effect on the mechanical properties of welded joint with fixed the all other parameters (H.I and interpass temperature).

The lateral expansion results confirm the effects of H.I and keeping interpass temperature with 80 °C on the ductility of welded joint zones as the results of impact tests.

Resulting values of toughness in HAZ are in all cases higher than those for the weld metal toughness, which indicates that HAZ is not the weakest place in the welded joint.

Welding using the lowest heat input is recommended, since, in this way, lower mixture degree between filler metal and basic metals is achieved.

V Acknowledgements

There have been many people who helped me to reaching this far, my sincere thanks to the My supervisors, Prof. ABD El Fatah Kourshid for giving me this great chance in life. Thanks for employees of PETROJET central workshop mechanical lab. For their help in preparing, finishing ,and processing the mechanical tests .

VI REFERENCES

- [1]. -Shigearu Suzuki ,Yoshifumi Nakano, Keisuke Hirose,Taketo Okumura ,Hiroshi Nishikawa and Mineo Sato," Production of 9%Ni steel plates for liquefied natural tanks " , Kawasaki steel technical report No. 6 , September 1982.
- [2]. -Manabu HOSHINO, Naoki SAITOH, Hirohide MURAOKA& Osamu SAEKI " Development of Super-9%Ni Steel Plates with Superior Low- Temperature Toughness for LNG Storage Tanks " , NIPPON STEEL TECHNICAL REPORT No. 90 July 2004 .
- [3]. - Jang-Bog Ju, Woo-sik Kim, Jae-il Jang , Variations in DBTT and CTOD within weld heat-affected zone of API X65 pipeline steel ,journal of Materials Science and Engineering A , 2012.
- [4]. - LEI Ming ,Guo Yunyi," Formation of precipitated austenite in 9%Ni steel and it s performance at cryogenic temperature ",ACTA Metallurgica sinica (english edition) ,Series A,Vol 2 No. 4 pp-244-248 , Jul 1989.
- [5]. - K,Hickmann, A.Kern, U. Schriever and J.Stumpfe , " *Production and properties of high strength nickel alloy steel plates for low temperature applications* " ,2005.
- [6]. - NISHIDA Shun-ichi, MATSUOKA Toshio& WADA Tsunemi" Technology and Products of JFE Steel's Three Plate Mills",JFE TECHNICAL REPORT No. 5 ,Mar. 2005LEI
- [7]. - S O H K I T A, Control of Strength and toughness in weld metals, Welding International 2003 17 (9) 693– 698.
- [8]. - C. Thaulowa,* , M. Haugea, Z.L. Zhanga, é. Ranestada, F.Fattorini , On the interrelationship between fracture toughness and material mismatch for cracks located at the fusion line of weldments ,Engineering Fracture Mechanics 64 (1999) 367±382.
- [9]. - Thaulow C, Paauw AJ, Hauge M, Toyoda M, Minami F.Fracture property of HAZ-notched weld joint with mechanical mismatching-Part II. ESIS Publ 17, 1994. p. 417-32.
- [10]. - R.Scott Funderburk , "A look of heat input" ,Welding Innovation Vol. XVI, No. 1, 1999.
- [11]. - G M. Evans and N. Bailey, "Metallurgy of basic weld metal", Abington Publishing, 1999.
- [12]. - Mike Lord, "Interpass temperature and the welding of strong steels", Welding in the World, 41: p. 452 - 459, 1998.
- [13]. -Tsuyoshi Takino &Rokuro Fujimoto , "Welding technology of LNG tank", Seitetsu Kenkyu,307 (1982),14229 – NS-13.
- [14]. -Kauzo Agusa,Masaaki Kosho,Noboru Nishiyama,Akio Kamada & Yoshifumi Nakano ,Matching ferritic filler MIG welding of 9%Ni steel, Kawasaki steel technical report No. 6 , September 1982.
- [15]. -Takahiro Kubo, Akio Ohmori and Osmu Tanigawa," Properties of high toughness 9% Ni heavy section steel plate and its applicability to 200 000K/LNG storage tank " ,Kawasaki steelgiho ,30, 1998 ,167-KW-20.
- [16]. -Sakino Yoshihiro ,Horikawa Kohsuke &Kamura Hisaya ,Welding heat input limit rolled steels for building structures based on simulated HAZ tests ,trans .JWRI,Vol.30(2001)No.1.
- [17]. -Jörgen Strömberg,ESAB AB, Göteborg , Sweden," Welding spherical tanks made of 9% nickel steel by TISSOT in France",Svetsaren-ESAB Vol.56- No. 2- 3,2001.
- [18]. - Jae-il Jang, Baik-Woo Lee, Jang-Bog Ju, Dongil Kwon&Woo-sik Kim, Effects of microstructural change on fracture characteristics in coarse grained heat-affected zones of QLT-processed 9% Ni steel, Materials Science and Engineering A340 (2003) 68 _ 79.
- [19]. -Aleksandar Bukvić, Zijah Burzić, Radica Prokić-Cvetković, Olivera Popović, Meri Burzić& Ratko Jovičić ,Welding technology selection effect on fracture-toughness parameters of BI-material welded joints Technical Gazette 19, 1(2012), 167-174.
- [20]. - C.K.Syn, B.Fultz and J.W.Morris , " Mechanical stability of retained austenite in tempered 9Ni steel" ,ASM and The

- [21]. Metallurgical society of AIME ,Vol 9A,Nov 1978-1635.
- [22]. 21 -K. Hickmann, A. Kern, U. Schriever and J. Stumpfe , "Production & properties of high- strength nickel alloy Steel plats for low temperature application" www.thyssenkrupp.com/documents/Publikationen/Techforum/techforum_1_2009_en.pdf.
- [23]. - ASME Sec II part C " Specifications for Welding Rods,Electrodes, and Filler Metals ", ED 2010
- [24]. - ASME Sec IX, "Qualification standard for welding and brazinf procedures, welders, brazers , and welding and brazing operators", Ed 2010.
- [25]. - Ph Bourges, M. Malingraux , el," Fabrication &welding of thick plates in 9%Nickel cryogenic steel", INDUSTRIEL Co. 2008 .
- [26]. ArcelorMittal USA , " Plate 9% Nickel Steel: For use at cryogenic temperatures ",December2010, www.arcelormittal.com